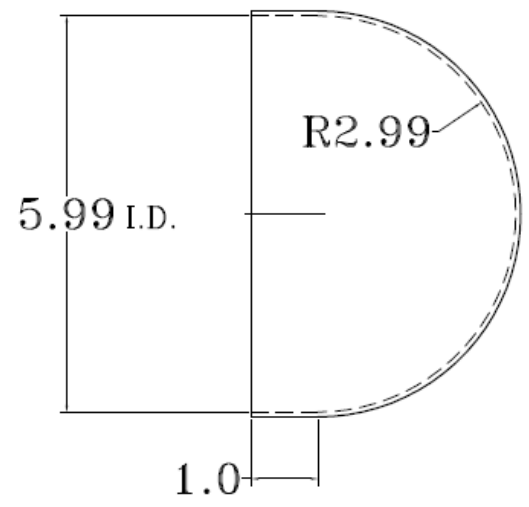
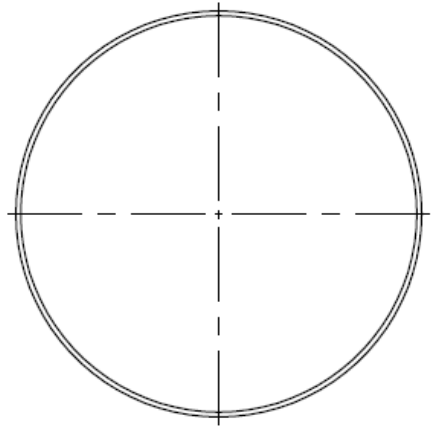
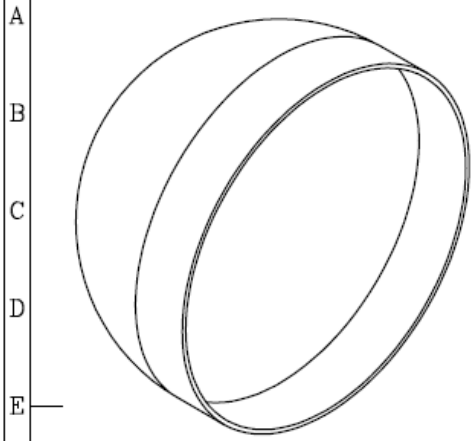


1 2 3 4 5 6 7 8 9 10 11 12 13 14 15 16 17 18

| Rev. | Date | Change |
|------|------|--------|
| N/C | | |



- Notes:
1. Finished material thickness can range from .030" to .125" depending on customer requirement.
 2. Parts formed on Toledo Metal Spinning Company tooling. One piece construction.
 3. Optional outside brushed finish available per request.

TMS TOLEDO METAL SPINNING Co.
 1819 Clinton Street, Toledo, OH 43607
 Tel:(419)535-5931 Fax:(419)535-0565
 www.toledometal spinning.com

P/N: HM0599-0100
 Material: Aluminum,Mild Steel,Stainless Steel;ParentMetalThickness;.060-.187
 DWG #:HEMI-5.98-1.0.dwg
 Desc:Hemisphere with Straight Wall

J/N: N/A
 Date: 08/02/06
 Page 1/1
 Drawn By:
 Donald H. Gray

Unless otherwise specified
 1. Tolerances:
 X ±0.25 X.XXX ±0.005
 XX ±0.12 X.XXXX ±0.001
 XXX ±0.03 Ang. ±0.25
 2. All dimensions are in inches
 3. Break all edges with R1/32" to R1/16"