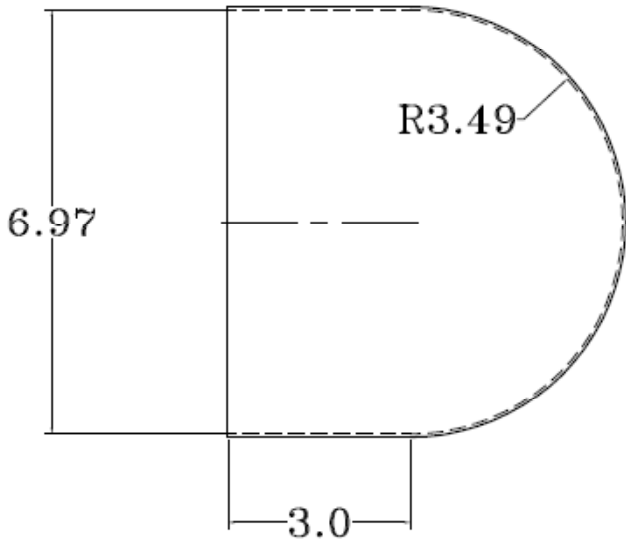
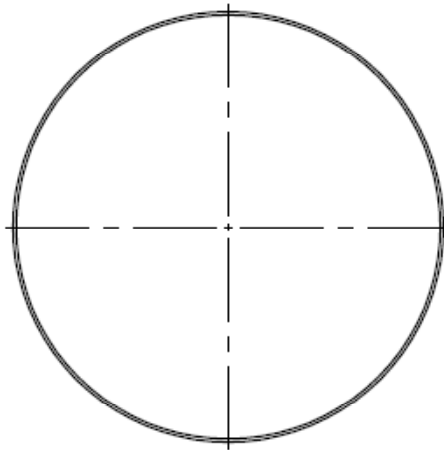
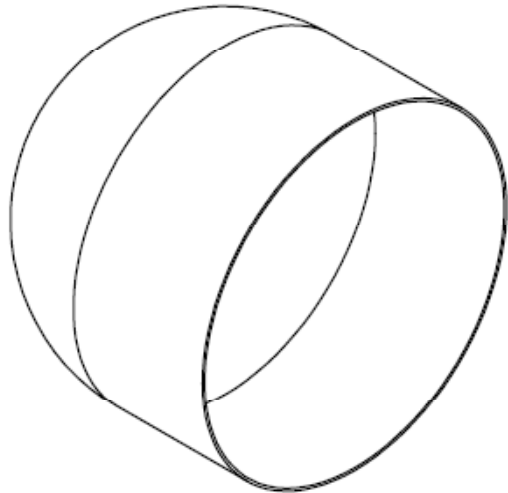


1 2 3 4 5 6 7 8 9 10 11 12 13 14 15 16 17 18

Rev.	Date	Change
N/C		

A  
B  
C  
D  
E  
F  
G  
H  
I



Notes:

1. Finished material thickness can range from .030" to .125" depending on customer requirement.
2. Parts formed on Toledo Metal Spinning Company tooling. One piece construction.
3. Optional outside brushed finish available per request.

MAX. STRAIGHT WALL



**TOLEDO METAL SPINNING Co.**  
 1819 Clinton Street, Toledo, OH 43607  
 Tel:(419)535-5931 Fax:(419)535-0565  
 www.toledometal spinning.com

P/N: HM0697-0300  
 Material: Aluminum,Mild Steel,Stainless Steel;ParentMetalThickness;.060-.187  
 DWG #:HEMI-6.97-3.dwg  
 Desc:Hemisphere with Straight Wall

J/N: N/A  
 Date: 09/11/06  
 Page 1/1  
 Drawn By:  
 Donald H. Gray

Unless otherwise specified  
 1. Tolerances:  
 X ±0.25 X.XXX ±0.005  
 XX ±0.12 X.XXXX ±0.001  
 XXX ±0.03 Ang. ±0.25  
 2. All dimensions are in inches  
 3. Break all edges with R1/32" to R1/16"