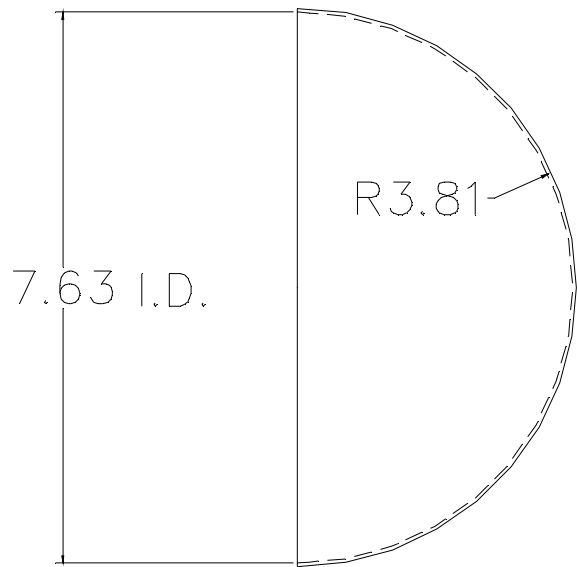
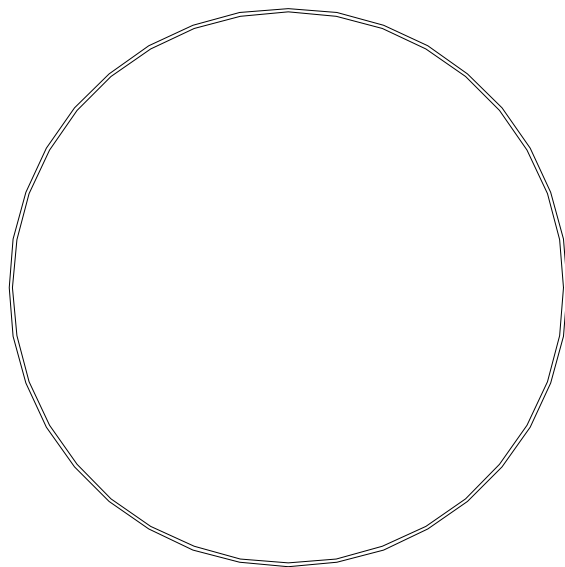
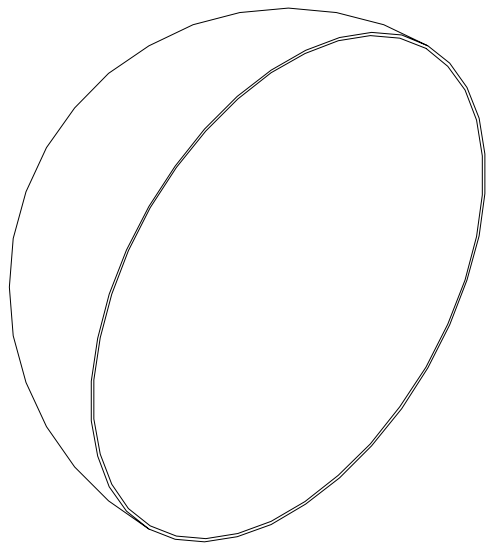


1 2 3 4 5 6 7 8 9 10 11 12 13 14 15 16 17 18

Rev.	Date	Change
N/C		

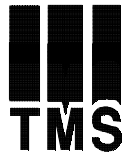
A
B
C
D
E
F
G
H
I



Notes:

1. Finished material thickness can range from .030" to .125" depending on customer requirement.
2. Parts formed on Toledo Metal Spinning Company tooling.
3. Optional outside brushed finish available per request.

NO STRAIGHT WALL
AVAILABLE



TOLEDO METAL SPINNING Co.
1819 Clinton Street, Toledo, OH 43607
Tel: (419)535-5931 Fax: (419)535-0565
www.toledometal spinning.com

P/N: HM0763-0000
Material: Aluminum, Mild Steel, Stainless Steel; Parent Metal Thickness; .060-.187
DWG #: HEMI-7.63-0.dwg
Desc: Hemisphere; No Straight Wall

J/N: N/A
Date: 03/16/07
Page 1/1
Drawn By: Donald H. Gray

Unless otherwise specified
1. Tolerances:
X. ±0.25 X.XXX ±0.005
X.X ±0.12 X.XXXX ±0.001
X.XX ±0.03 Ang. ±0.25
2. All dimensions are in inches
3. Break all edges with R1/32" to R1/16"