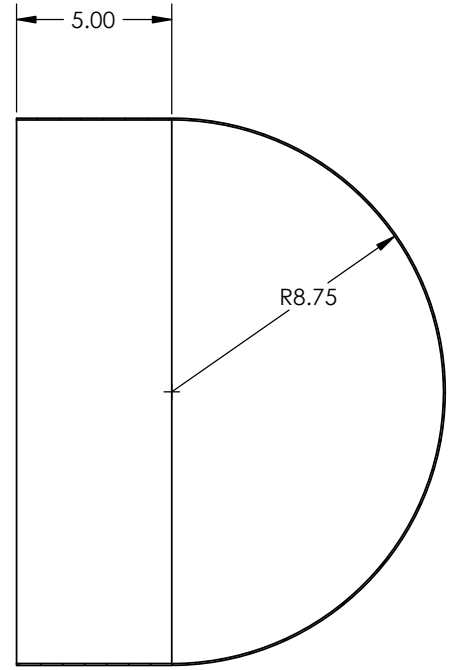
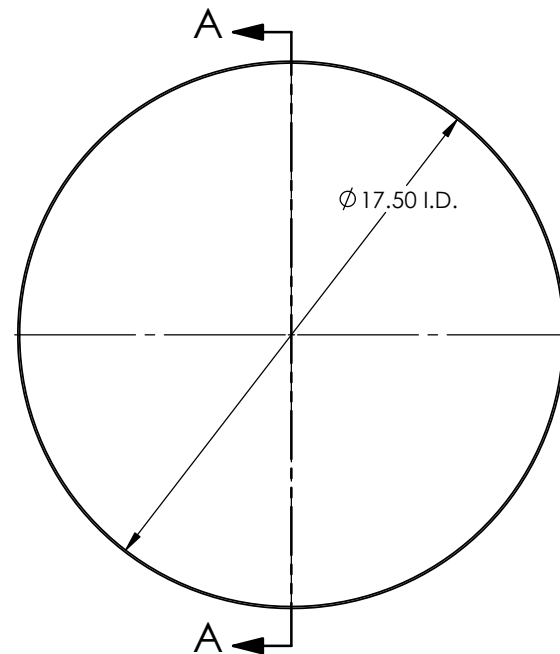
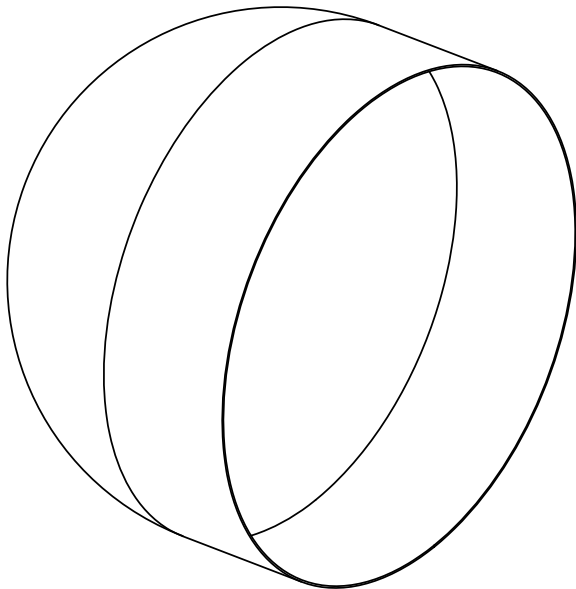


1 2 3 4 5 6 7 8 9 10 11 12 13 14 15 16 17 18

A  
B  
C  
D  
E  
F  
G  
H



SECTION A-A  
SCALE 1 : 4

- Notes:
1. Finished material thickness can range from 0.030" to 0.125" depending upon customer requirement.
  2. Parts formed on Toledo Metal Spinning Company tooling.
  3. Optional outside brush finish available per request.



**TOLEDO METAL SPINNING COMPANY**

1819 Clinton Street, Toledo, OH 43607  
 Tel:(419) 535-5931, Fax: (419) 535-0565  
 www.toledometal spinning.com

P/N: HM1750-0500	Drawn By: L.F.	Unless otherwise specified: 1. Tolerances: X.    ±0.25    X.XXX ±0.005 X.X   ±0.12    X.XXXX ±0.001 X.XX ±0.03    Ang.    ±1° 2. All dimensions are in inches 3. Break all edges with R1/32" to R1/16"
Material: Aluminum, Mild Steel, Stainless Steel	Date: 09.19.2009	
Parent Metal Thickness: 0.060" ~ 0.187"	Scale: 1:4	
DWG #: HM1750-0500		