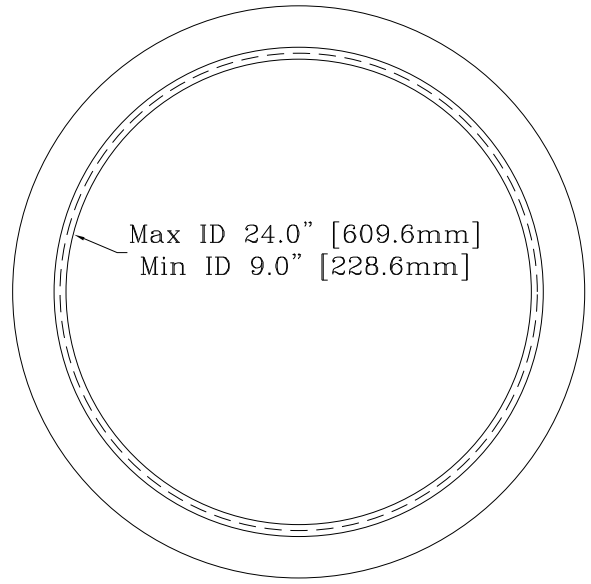
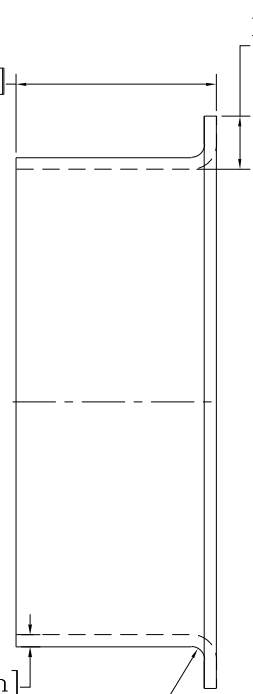


Max OAH and max material thickness cannot be obtained on the same part since they have an inverse relationship in the manufacturing process. See the SCRC chart for a graphical representation of this relationship or use cylinder calculation pages on our website to check specific dimensions and or to place a RFQ.

A  
B  
C  
D  
E  
F  
G  
H  
I

OAH  
Max 6.0" [152.4mm]  
Min 3.0" [76.2mm]

Max 1 1/2" [38.1mm]  
Min 3/4" [19.1mm]



Max ID 24.0" [609.6mm]  
Min ID 9.0" [228.6mm]

Wall Thickness  
Max 12 Ga. 0.105" [2.68mm]  
Min 20 Ga. 0.036" [0.91mm]

Max 0.12" [3.0mm]  
Min 0.06" [1.5mm]



**TOLEDO METAL SPINNING Co.**  
1819 Clinton Street, Toledo, OH 43607  
Tel:(419)535-5931 Fax:(419)535-0565  
www.toledometal spinning.com

P/N: S-CY-XSF-xDxx.xxx  
Desc: Standard single XL flanged cylinder for SC  
Material: Al, M/S, SS, Inco. 625  
DWG# S-CY-XSF-xDxx.xxx.dwg Rev# N/C

Unless otherwise specified (DU = Inches)  
Tolerances:  
X. ±0.25 X.XX ±0.030 X.XXXX ±0.001  
X.X ±0.12 X.XXX ±0.010 Ang. ±0.25  
Break all edges with R1/32" to R1/16"