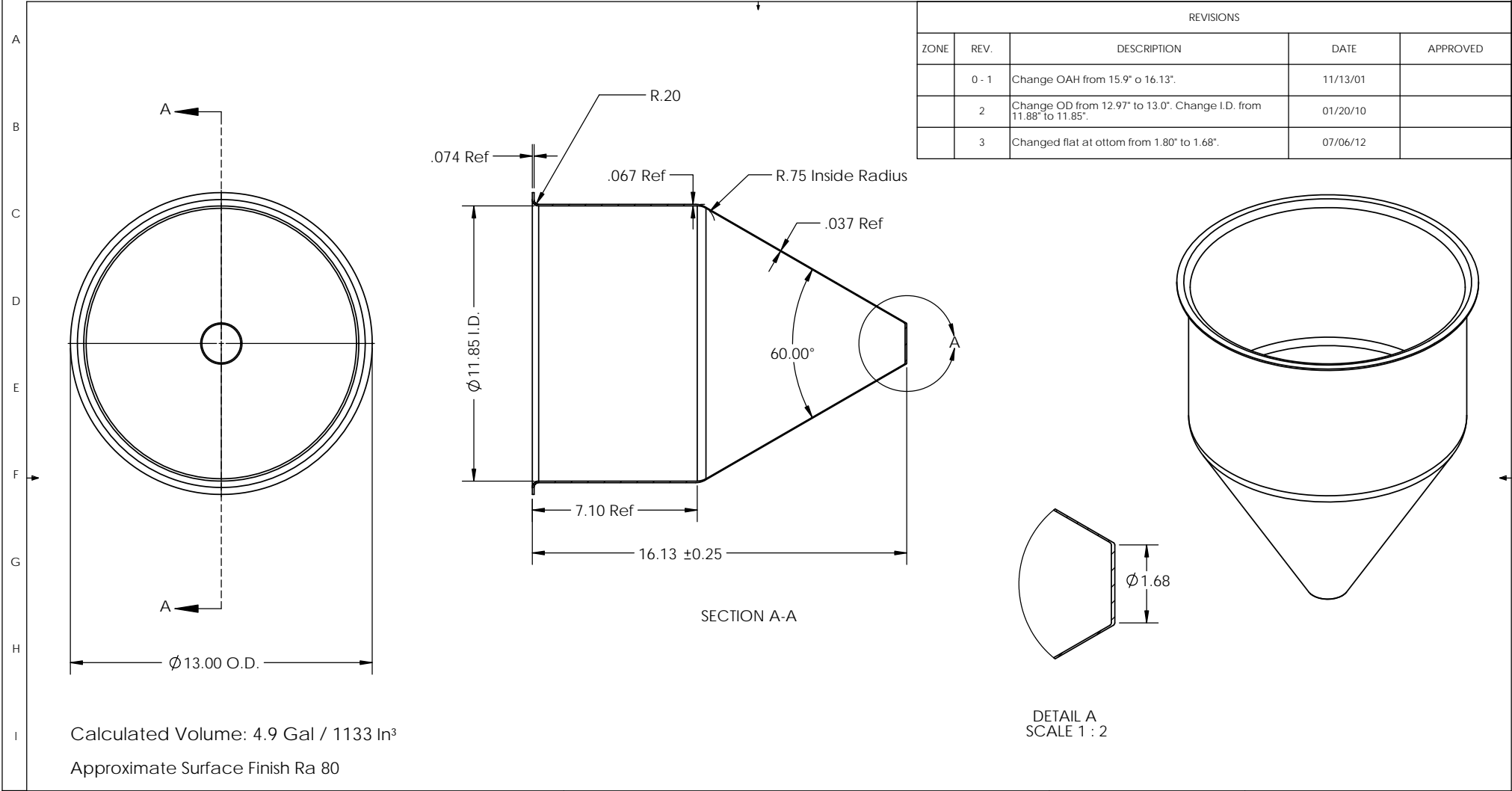


1 2 3 4 5 6 7 8 9 10 11 12 13 14 15 16 17 18



REVISIONS				
ZONE	REV.	DESCRIPTION	DATE	APPROVED
	0 - 1	Change OAH from 15.9" o 16.13".	11/13/01	
	2	Change OD from 12.97" to 13.0". Change I.D. from 11.88" to 11.85".	01/20/10	
	3	Changed flat at ottom from 1.80" to 1.68".	07/06/12	



**TOLEDO METAL SPINNING COMPANY**  
1819 Clinton Street, Toledo, OH 43607  
Tel:(419) 535-5931, Fax: (419) 535-0565  
www.toledometal spinning.com

PART NO. TMS12714	DATE: 07/06/12
DESCRIPTION: 12" hopper with 7" straight wall	DRAWN BY: D.J.
MATERIAL: 304 SS 14 GA	REV. 03

Unless otherwise specified:

1. Tolerances:  
X. ±0.25 X.XXX ±0.005  
X.X ±0.12 X.XXXX ±0.001  
X.XX ±0.03 Ang. ±1°

2. All dimensions are in inches  
3. Break all edges with R1/32" to R1/16"