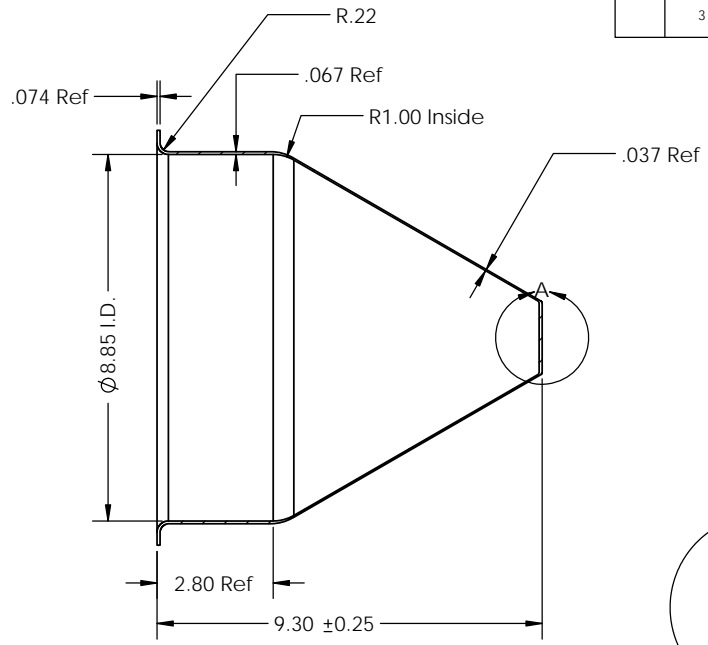
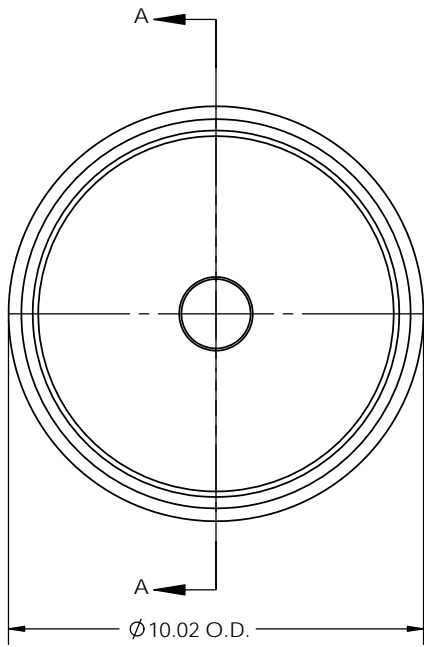


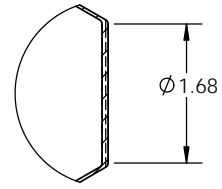
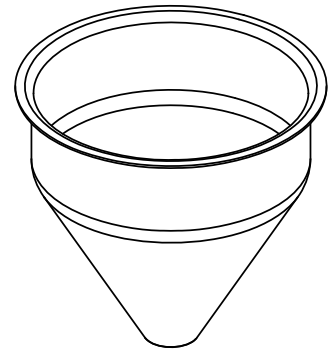
1 2 3 4 5 6 7 8 9 10 11 12 13 14 15 16 17 18

A
B
C
D
E
F
G
H
I

REVISIONS				
ZONE	REV.	DESCRIPTION	DATE	APPROVED
	0-1	Changed diameter of flat from 1.86" to 1.65".	01/20/12	
	2	Changed diameter of flat from 1.65" to 1.68".	04/10/12	
	3	Changed side wall length from 3.10" to 2.80".	07/19/12	



SECTION A-A
SCALE 1 : 3



DETAIL A
SCALE 2 : 3

Calculated Volume: 1.5 Gal / 346 In³
Approximate Surface finish Ra 80



TOLEDO METAL SPINNING COMPANY

1819 Clinton Street, Toledo, OH 43607
Tel:(419) 535-5931, Fax: (419) 535-0565
www.toledometal spinning.com

PART NO. TMS9314	DATE: 07/19/2012
DESCRIPTION: 9" hopper with 3" straight wall	DRAWN BY: D.J.
MATERIAL: 304 SS 14 Ga	REV. 03

Unless otherwise specified:
1. Tolerances:
X. ±0.25 X.XXX ±0.005
X.X ±0.12 X.XXXX ±0.001
X.XX ±0.03 Ang. ±1°
2. All dimensions are in inches
3. Break all edges with R1/32" to R1/16"