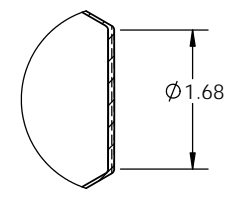
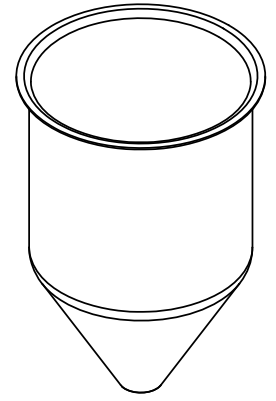
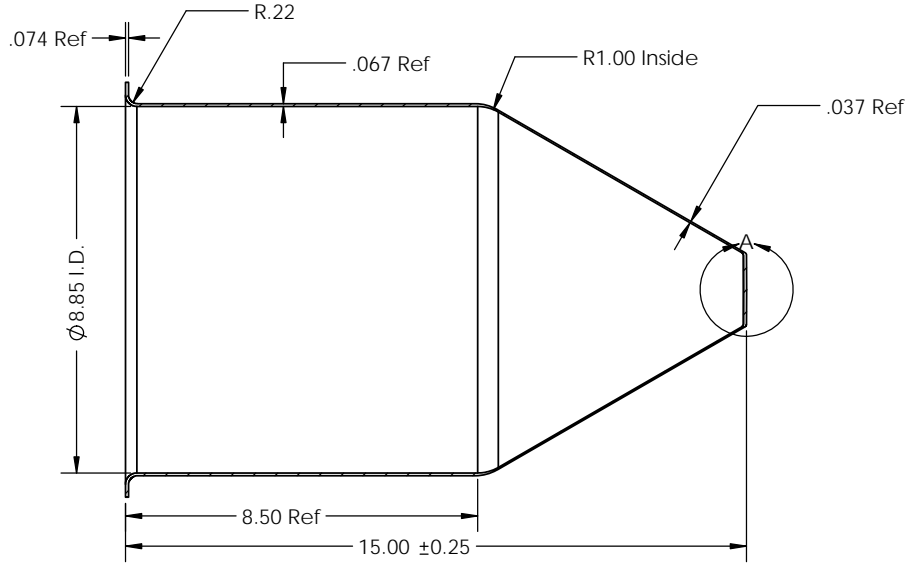
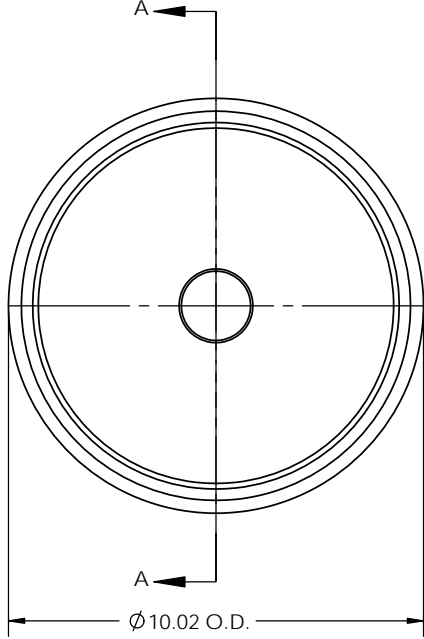


1 2 3 4 5 6 7 8 9 10 11 12 13 14 15 16 17 18

A
B
C
D
E
F
G
H
I

| REVISIONS | | | | |
|-----------|------|---|----------|----------|
| ZONE | REV. | DESCRIPTION | DATE | APPROVED |
| | 0-1 | Changed diameter of flat from 1.86" to 1.68". Changed side wall length from 8.7 to 8.29". | 01/20/12 | |
| | 2 | Changed side wall length from 8.7 to 8.29". | 04/09/12 | |
| | 3 | Changed side wall length from 8.29" to 8.50". | 07/19/12 | |



SECTION A-A
SCALE 1 : 3

DETAIL A
SCALE 2 : 3

Calculated Volume: 3.0 Gal / 693 In³
Approximate Surface finish Ra 80



TOLEDO METAL SPINNING COMPANY

1819 Clinton Street, Toledo, OH 43607
Tel:(419) 535-5931, Fax: (419) 535-0565
www.toledometal spinning.com

| | | |
|--|------------------|---|
| PART NO. TMS9914 | DATE: 07/19/2012 | Unless otherwise specified: 1. Tolerances: X. ±0.25 X.XXX ±0.005 X.X ±0.12 X.XXXX ±0.001 X.XX ±0.03 Ang. ±1° 2. All dimensions are in inches 3. Break all edges with R1/32" to R1/16" |
| DESCRIPTION: 9" hopper with 9" straight wall | DRAWN BY: D.J. | |
| MATERIAL: 304 SS 14 Ga | REV. 03 | |
| | | |