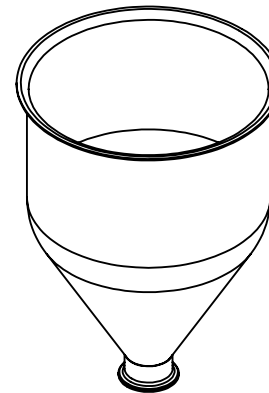
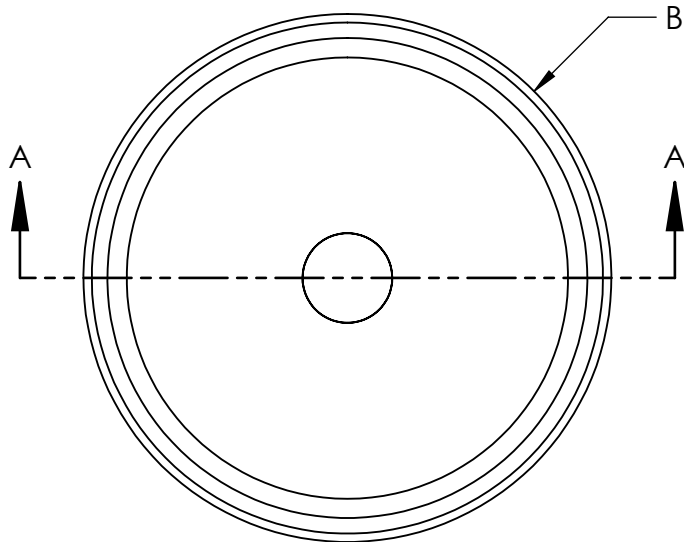


PART # SS 304	PART # SS 316	Volume (Gallons)	A	B	C	D	E	F
106000	107000	0.2	3.91	4.38	2.98	5.9	0.03	0.05
106001	107001	0.8	6.25	7.25	4.51	9.7	0.04	0.07
106002	107002	1.5	8.85	10.02	2.80	10.2	0.04	0.07
106003	-	3.0	8.85	10.02	8.50	10.2	0.04	0.07
106004	107004	4.9	11.85	13.00	7.10	17.1	0.04	0.07
106005	-	6.7	11.85	13.00	10.77	20.7	0.04	0.07
106006	107006	6.4	14.00	15.13	5.90	17.7	0.04	0.07
106007	-	10.5	14.00	15.13	11.72	23.4	0.04	0.07
106008	107008	7.3	16.00	17.26	3.29	17.2	0.04	0.07
106009	-	12.0	16.00	17.26	8.80	22.7	0.04	0.07
106010	107010	14.7	19.93	21.19	4.33	21.9	0.04	0.07
106011	-	21.0	19.93	21.19	9.23	26.4	0.04	0.07
106012	-	23.0	21.09	22.50	8.33	22.0	0.04	0.07
106013	107013	25.5	24.00	25.25	5.31	26.4	0.04	0.07
106014	-	30.5	24.00	25.25	8.41	29.4	0.04	0.07
106015	-	58.3	32.00	33.20	6.00	33.2	0.06	0.07
106016	107016	51.1	36.06	N/A	1.00	30.6	0.06	0.07

NOTES UNLESS OTHERWISE SPECIFIED

- PART IS SEAMLESS, FORMED FROM STAINLESS STEEL SHEET METAL CONTAINING NO WELDS.
- INSIDE FINISH: BRUSHED FINISH TO 32 Ra.
- OUTSIDE FINISH: BRUSHED FINISH TO 125 Ra.
- PART # 106016 & 107016 HAS NO FLANGE.
- ALL HOPPERS CAN HAVE A ROLLED AND WELDED CYLINDER ADDED TO STRAIGHT WALL LENGTH, WITH OR WITHOUT A FLANGE.
- DIMENSIONS ARE IN INCHES.
- NO SHARP EDGES OR BURRS.



TOLEDO METAL SPINNING EST. 1929

TITLE:
HOPPER WITH WELDED 2" TUBE FITTING

SIZE | DRAWING NUMBER
A | **801D003**

FOR REFERENCE ONLY

SHEET 1 OF 1