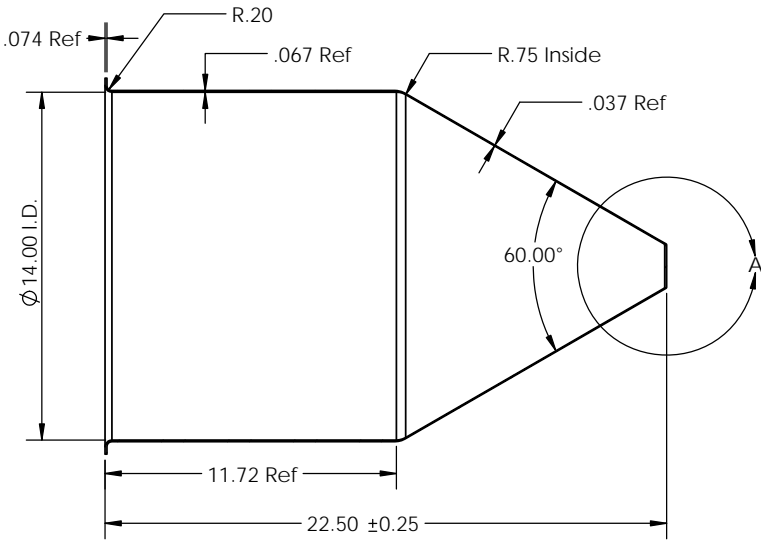
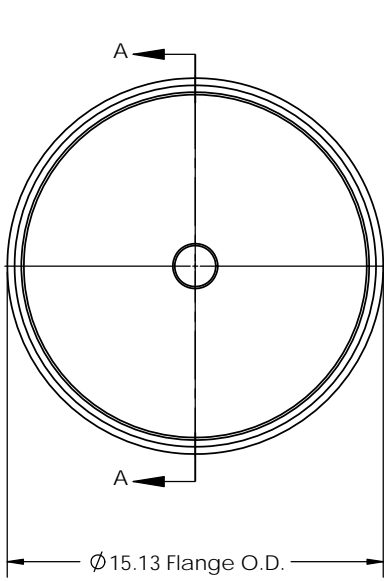
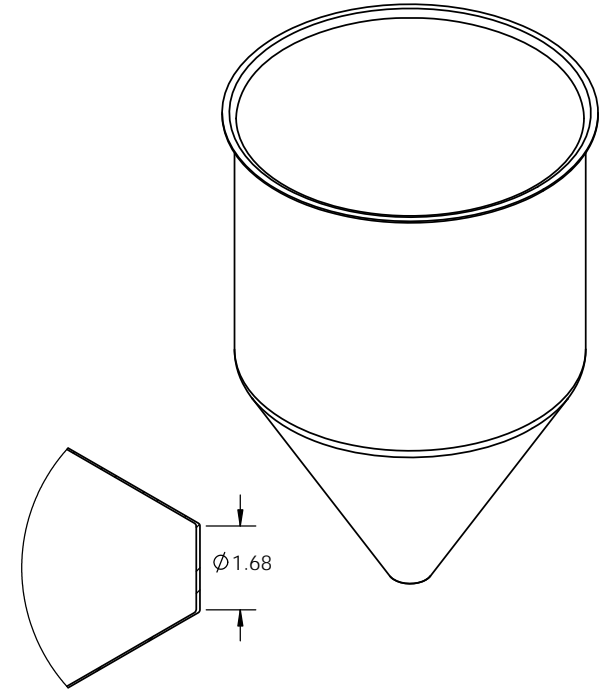


1 2 3 4 5 6 7 8 9 10 11 12 13 14 15 16 17 18

A  
B  
C  
D  
E  
F  
G  
H  
I



SECTION A-A



DETAIL A  
SCALE 2 : 5

REVISIONS				
ZONE	REV.	DESCRIPTION	DATE	APPROVED
	0 - 1	Changed inside radius from 0.63" to 0.75". Changed I.D. from 14.06" to 14.00".	01/22/10	
	2	Changed flat at bottom from 1.85" to 1.68". Changed OAH from 22.60" to 22.50". Changed side wall dimension from 11.75" to 11.72".	04/05/12	

Calculated Volume: 10.5 Gal / 2433 In<sup>3</sup>  
 Approximate Surface Finish Ra 80



**TOLEDO METAL SPINNING COMPANY**

1819 Clinton Street, Toledo, OH 43607  
 Tel: (419) 535-5931, Fax: (419) 535-0565  
 www.toledometal spinning.com

PART NO.:	TMS141214	DATE:	4/05/2012	Unless otherwise specified: 1. Tolerances: X. ±0.25 X.XXX ±0.005 X.X ±0.12 X.XXXX ±0.001 X.XX ±0.03 Ang. ±1° 2. All dimensions are in inches 3. Break all edges with R1/32" to R1/16"
DESCRIPTION:	14" Hopper with 12" Straight Wall	DRAWN BY:	L.F.	
MATERIAL:	304 SS 14 Ga	REV.	02	