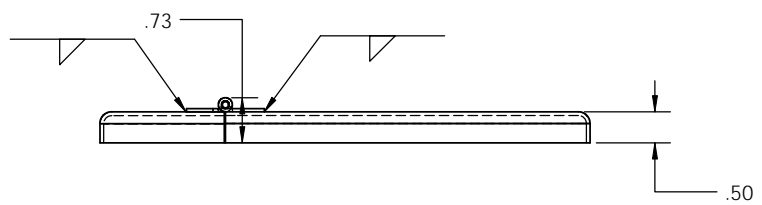
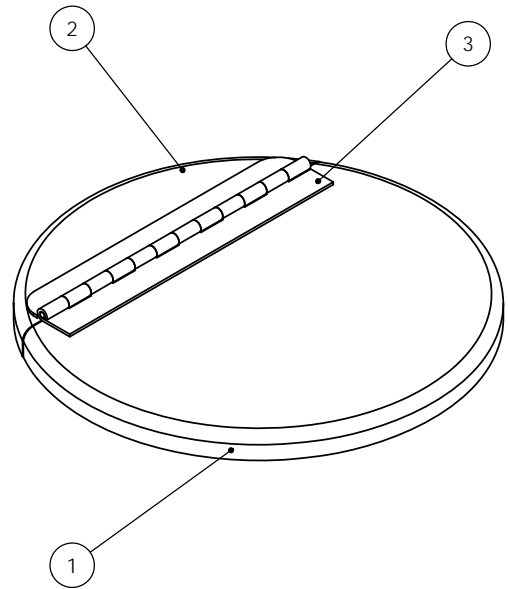
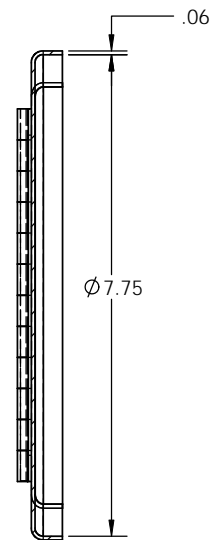
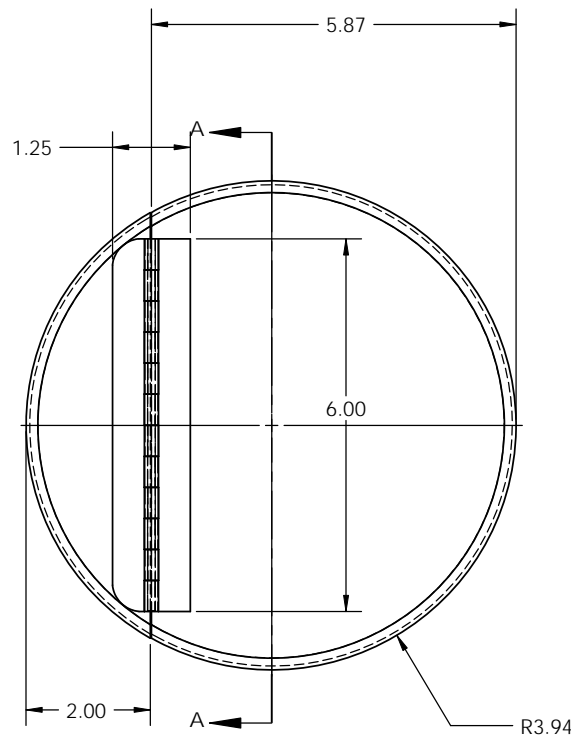


ITEM NO.	PART NUMBER	DESCRIPTION	QTY.
1	TMSL1616_FRT	Front section of split TMSL1616 lid	1
2	TMSL1616REAR	Rear section on TMSL1616 lid	1
3	1582A14	McMaster Carr SS hinge 0.050"	1



SECTION A-A
SCALE 1 : 2

SolidWorks maintained data. Changes shall be incorporated electronically.

PROPRIETARY AND CONFIDENTIAL
THE INFORMATION CONTAINED IN THIS DRAWING IS THE SOLE PROPERTY OF TOLEDO METAL SPINNING COMPANY. ANY REPRODUCTION IN PART OR AS A WHOLE WITHOUT THE WRITTEN PERMISSION OF TOLEDO METAL SPINNING COMPANY IS PROHIBITED.

UNLESS OTHERWISE SPECIFIED:		NAME	DATE	TOLEDO METAL SPINNING COMPANY
DIMENSIONS ARE IN INCHES TOLERANCES: FRACTIONAL ±1/32" ANGULAR: MACH ± 1° BEND ±1° TWO PLACE DECIMAL ±0.030" THREE PLACE DECIMAL ±0.015"		DRAWN L.F.	04.01.10	
INTERPRET GEOMETRIC TOLERANCING PER: ANSI		CHECKED		TITLE: TMSL1616 Hinged
MATERIAL 304SS		ENG APPR.		SIZE B
FINISH Brush Finish		MFG APPR.		DWG. NO. TMSL1616_Hinged
DO NOT SCALE DRAWING		Q.A.		REV
		COMMENTS:		SCALE: 1:2 WEIGHT: SHEET 1 OF 1