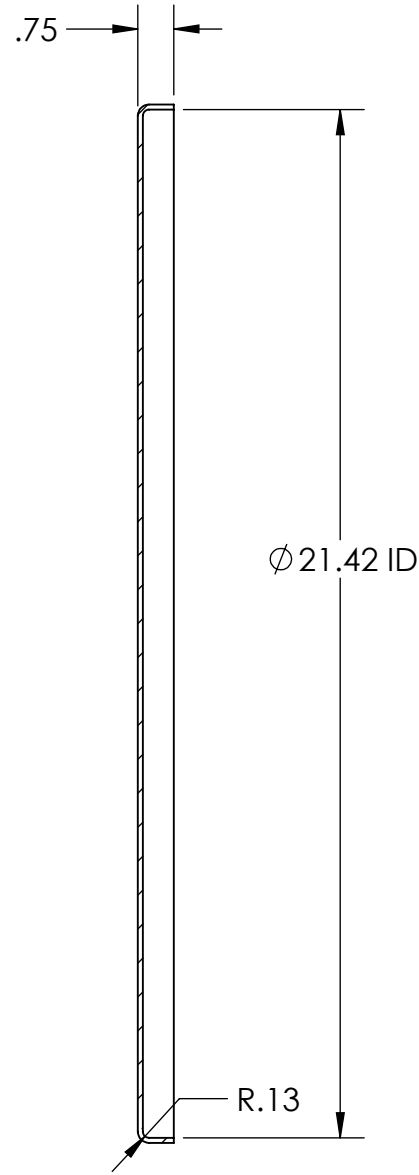
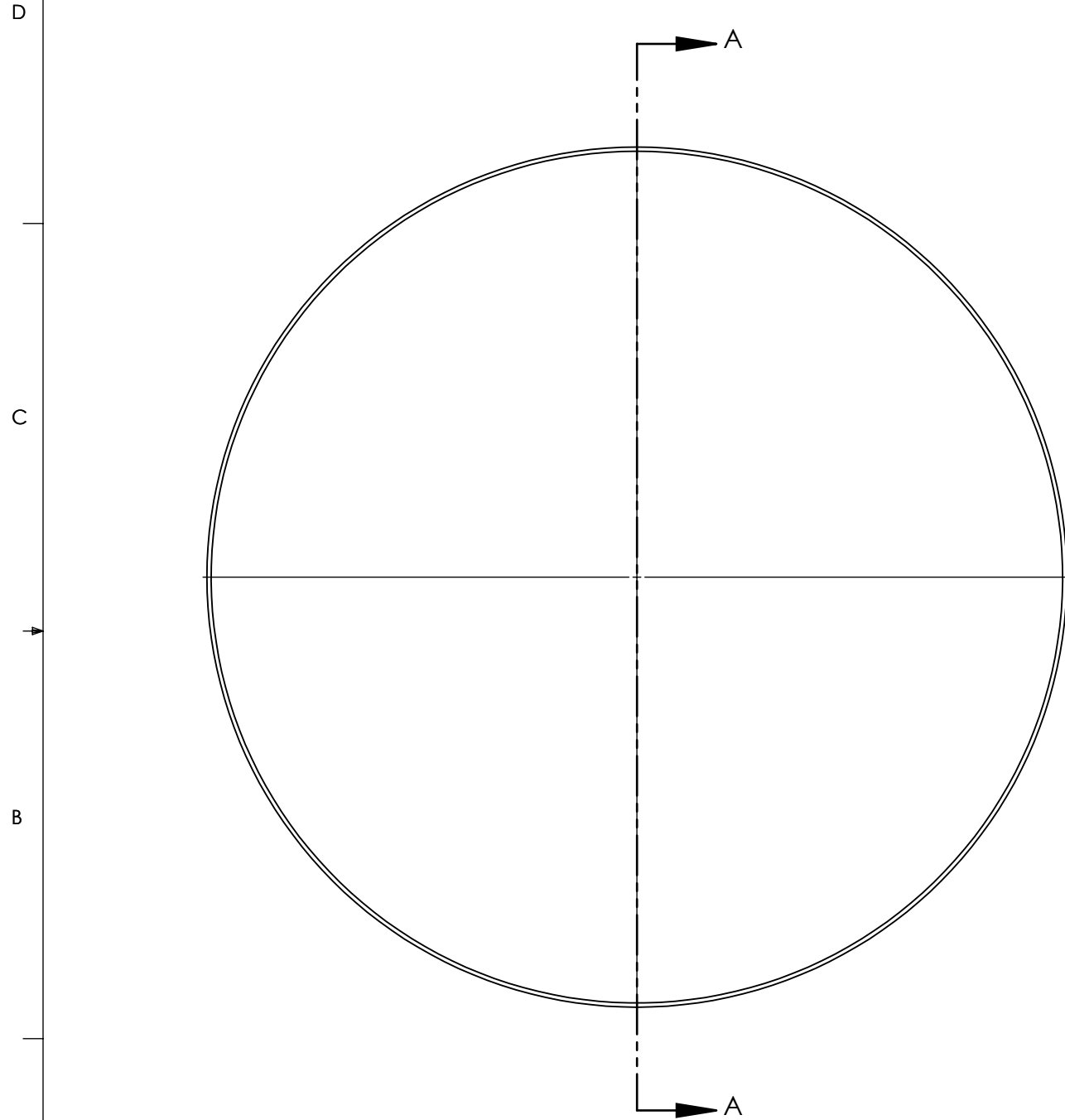


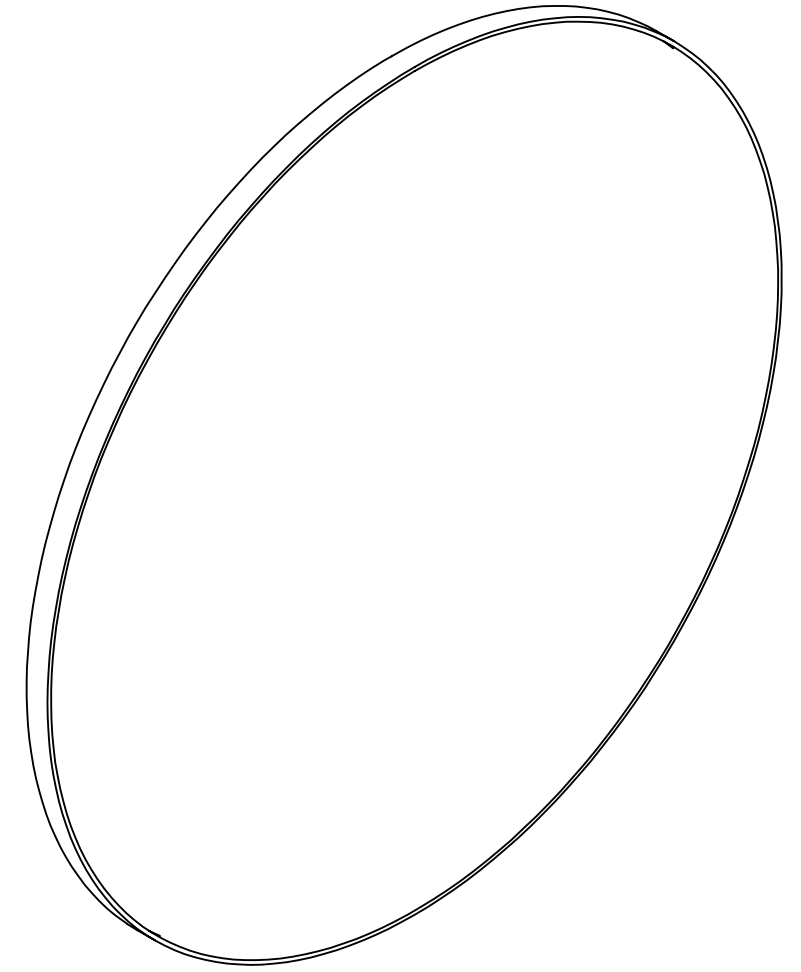
NOTES UNLESS OTHERWISE SPECIFIED

1. MATERIAL: 304SS
2. REMOVE ALL SHARP EDGES AND BURRS. BREAK WITH A .02 IN X 45 DEG CHAMFER OR .02 IN RADII.

| REVISIONS | | | | |
|-----------|------|-----------------------------------|-----------|----------|
| ZONE | REV. | DESCRIPTION | DATE | APPROVED |
| | A | INITIAL RELEASE FOR MANUFACTURING | 31MAY2013 | B. KEEL |



SECTION A-A



| | | | | | |
|--|-----------|---------|-----------|-------------------------------|--------------|
| UNLESS OTHERWISE SPECIFIED: | | NAME | DATE | TOLEDO METAL SPINNING Co. | |
| 1. DIMENSIONS ARE IN INCHES | DRAWN | B. KEEL | 31MAY2013 | TITLE: TMS 20" LID - 12 Ga | |
| 2. TOLERANCE: | CHECKED | | | | |
| FRACTIONAL ± .25 | ENG APPR. | | | | |
| X.X ±.1 | MFG APPR. | | | | |
| X.XX ±.03 | Q.A. | | | SIZE | DWG. NO. |
| X.XXX ±.01 | COMMENTS: | | | B | TMSL2012 |
| ANGULAR: ±2 DEG. | | | | SCALE: 1:4 | WEIGHT: |
| 3. THIRD ANGLE PROJECTION | | | | | SHEET 1 OF 1 |
| INTERPRET DRAWING PER ASME-Y14.5M-1994 STANDARDS | | | | | |
| MATERIAL | | | | | |
| FINISH | | | | | |
| DO NOT SCALE DRAWING | | | | | |

PROPRIETARY AND CONFIDENTIAL
 THE INFORMATION CONTAINED IN THIS DRAWING IS THE SOLE PROPERTY OF TOLEDO METAL SPINNING COMPANY. ANY REPRODUCTION IN PART OR AS A WHOLE WITHOUT THE WRITTEN PERMISSION OF TOLEDO METAL SPINNING COMPANY IS PROHIBITED.

8 7 6 5 4 3 2 1

D
C
B
A

D
C
B
A

8 7 6 5 4 3 2 1