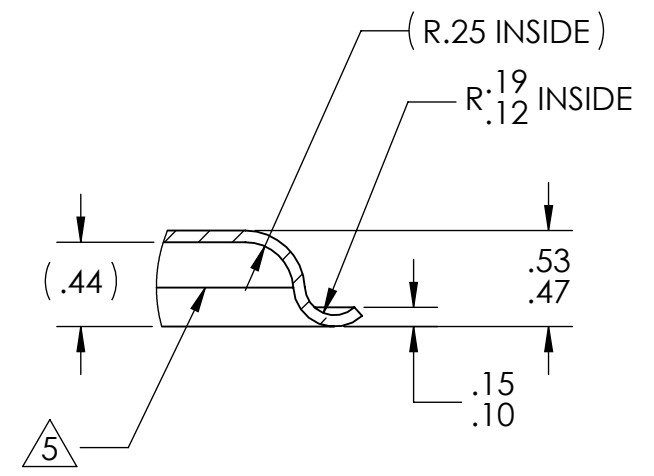
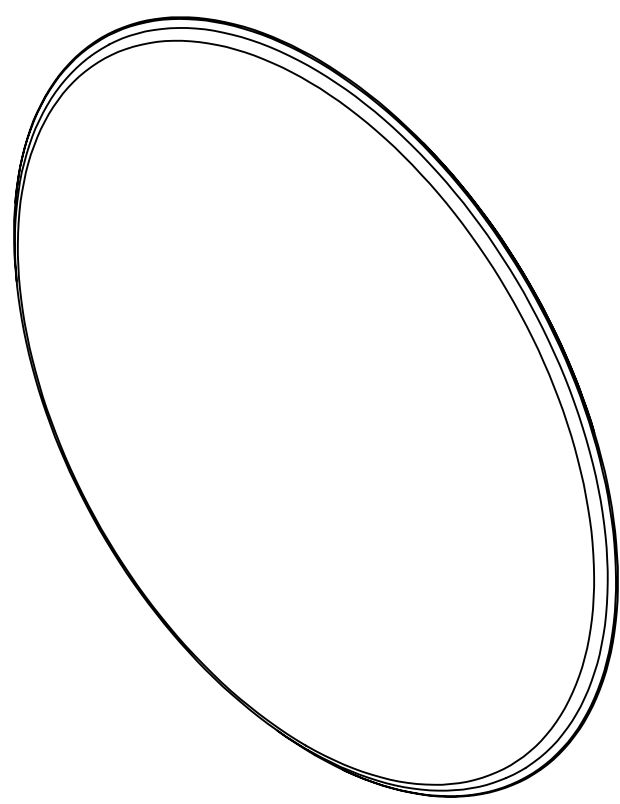
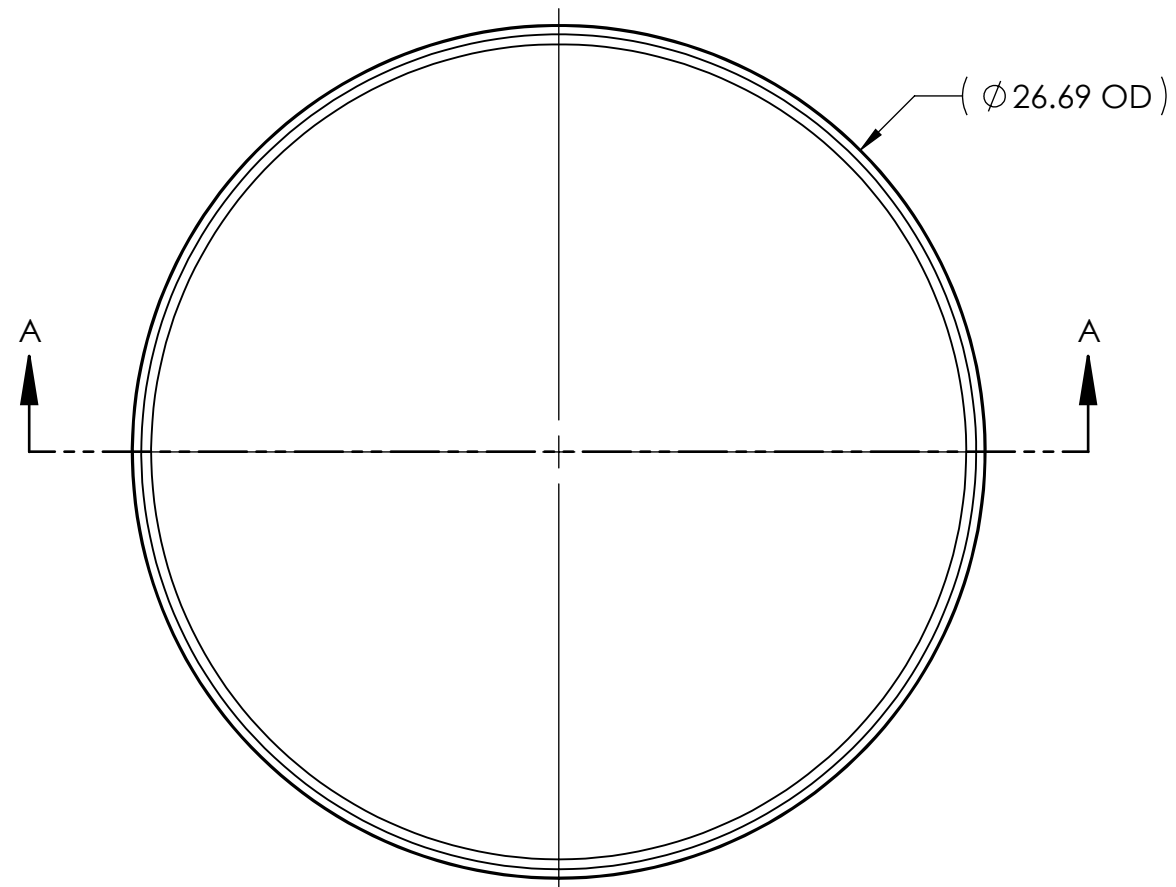


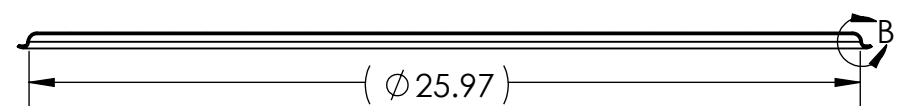
NOTES UNLESS OTHERWISE SPECIFIED

1. MATERIAL: 304 STAINLESS STEEL
2. FINISH: NO METAL FINISHING REQUIRED. THE FINAL FINISH SHALL BE THE RESULT OF THE PROCESSES USED TO FABRICATE THE SHAPE.
3. REMOVE ALL SHARP EDGES AND BURRS. BREAK WITH A .02 IN X 45 DEG CHAMFER OR .02 IN RADII.
4. DESIGN IS PER CUSTOMER SPECIFICATIONS. TMS IS PROVIDING DRAWING SUPPORT ONLY AND UNDER NO CIRCUMSTANCE MAKES ANY CLAIMS FOR PERFORMANCE. TMS ASSUMES NO LIABILITY FOR THE DESIGN REGARDLESS OF ITS USE AND OR METHOD OF INSTALLATION.
5. (Ø 25.97" ID) IS WHERE BOTH RADII ARE TANGENT TO EACH OTHER.

REVISIONS				
ZONE	REV.	DESCRIPTION	DATE	APPROVED
	A	INITIAL RELEASE FOR MANUFACTURING	28JAN2014	B. KEEL



DETAIL B
SCALE 1 : 1



SECTION A-A

UNLESS OTHERWISE SPECIFIED:		NAME	DATE	TOLEDO METAL SPINNING Co.	
1. DIMENSIONS ARE IN INCHES		DRAWN	B. KEEL	23JAN2014	
2. TOLERANCE:		CHECKED		TITLE:	
FRACTIONAL ± .25		ENG APPR.		TMSL2416-BEADED	
X.X ±.1		MFG APPR.		SIZE	DWG. NO.
X.XX ±.03		Q.A.		B	TMSL2416-BEADED
X.XXX ±.01		COMMENTS:		SCALE: 1:6	WEIGHT:
ANGULAR: ±2 DEG.				SHEET 1 OF 1	
3. THIRD ANGLE PROJECTION					
INTERPRET DRAWING PER ASME-Y14.5M-1994 STANDARDS					
MATERIAL					
FINISH					
DO NOT SCALE DRAWING					
<p>PROPRIETARY AND CONFIDENTIAL</p> <p>THE INFORMATION CONTAINED IN THIS DRAWING IS THE SOLE PROPERTY OF TOLEDO METAL SPINNING COMPANY. ANY REPRODUCTION IN PART OR AS A WHOLE WITHOUT THE WRITTEN PERMISSION OF TOLEDO METAL SPINNING COMPANY IS PROHIBITED.</p>				REV	A